

SIMONSWERK

METAL CONSTRUCTIONS

KO 50 140

2-part weld-on hinge with flat tip and steel pin

hinge

Technical details

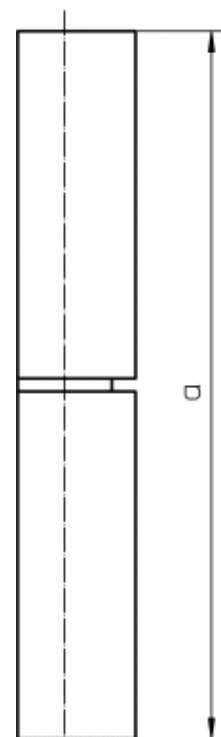
| | |
|--------------------|----------|
| knuckle length | 140,0 mm |
| knuckle diameter | 20,0 mm |
| material thickness | 4,5 mm |
| pin diameter | 11,0 mm |

Note

Version with steel pin and brass raceway.

Items (DIN reference: DIN right and left hand)

| | |
|---------------------|-------------------|
| Finish(es) | steel self colour |
| packing unit | pack of 25 |
| item number | 5 180746 0 00208 |



front view

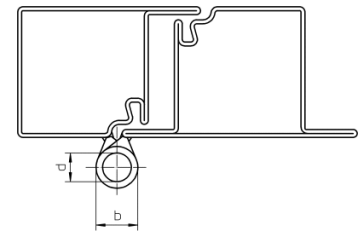
SIMONSWERK

METAL CONSTRUCTIONS

KO 50 140

2-part weld-on hinge with flat tip and steel pin

hinge



cross section