

SIMONSWERK

METAL CONSTRUCTIONS

KO 50 80

2-part weld-on hinge with flat tip and steel pin

hinge

Technical details

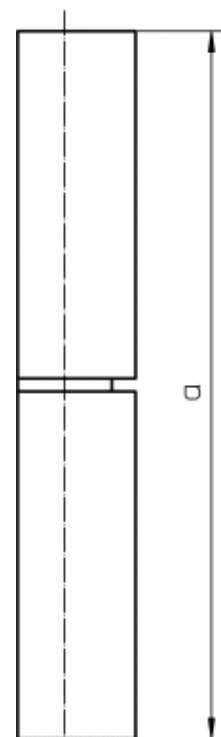
knuckle length	80,0 mm
knuckle diameter	13,0 mm
material thickness	3,0 mm
pin diameter	7,0 mm

Note

Version with steel pin and brass raceway.

Items (DIN reference: DIN right and left hand)

Finish(es)	steel self colour
packing unit	pack of 25
item number	5 180743 0 00208



front view

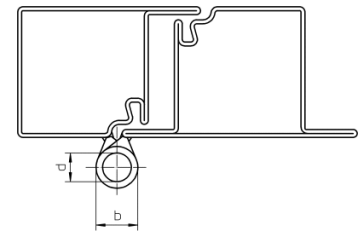
SIMONSWERK

METAL CONSTRUCTIONS

KO 50 80

2-part weld-on hinge with flat tip and steel pin

hinge



cross section