

SIMONSWERK

METAL CONSTRUCTIONS

KO 6 140x14x4

2-part weld-on hinge for steel doors and steel windows

hinge

Technical details

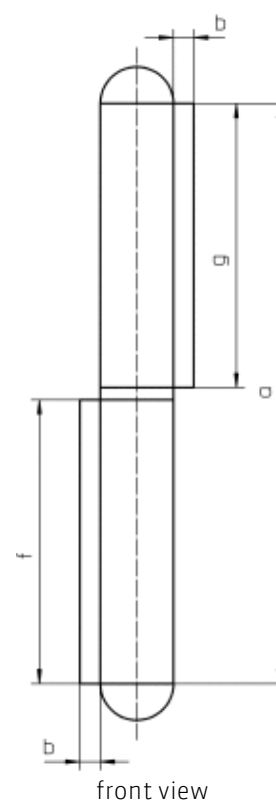
| | |
|--------------------|---------------|
| knuckle length | 140,0 mm |
| h x b frame leaf | 70,0 x 5,0 mm |
| knuckle diameter | 22,0 mm |
| material thickness | 4,0 mm |
| h x b door leaf | 70,0 x 5,0 mm |
| pin diameter | 14,0 mm |

Note

Equipped with fixed, galvanized washered pin (washer 2 mm high) and galvanized tip.

Items (DIN reference: DIN right and left hand)

| | |
|---------------------|-------------------|
| Finish(es) | steel self colour |
| packing unit | pack of 10 |
| item number | 5 140630 0 00206 |



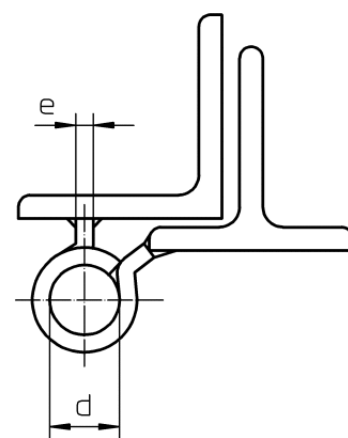
SIMONSWERK

METAL CONSTRUCTIONS

KO 6 140x14x4

2-part weld-on hinge for steel doors and steel windows

hinge



cross section