

SIMONSWERK

METAL CONSTRUCTIONS

KO 6 160x14x4

2-part weld-on hinge for steel doors and steel windows

hinge

Technical details

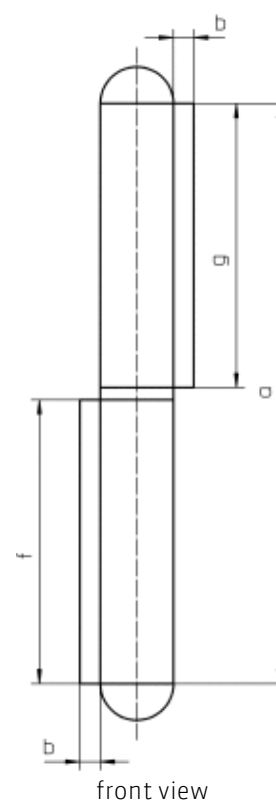
knuckle length	160,0 mm
h x b frame leaf	80,0 x 5,0 mm
knuckle diameter	22,0 mm
material thickness	4,0 mm
h x b door leaf	80,0 x 5,0 mm
pin diameter	14,0 mm

Note

Equipped with fixed, galvanized washered pin (washer 2 mm high) and galvanized tip.

Items (DIN reference: DIN right and left hand)

Finish(es)	steel self colour
packing unit	pack of 10
item number	5 140631 0 00206



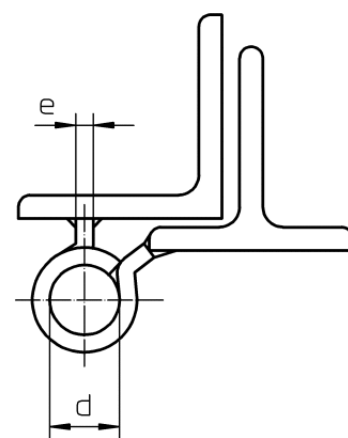
SIMONSWERK

METAL CONSTRUCTIONS

KO 6 160x14x4

2-part weld-on hinge for steel doors and steel windows

hinge



cross section