

SIMONSWERK

METAL CONSTRUCTIONS

KO 6 80x9x3

2-part weld-on hinge for steel doors and steel windows

hinge

Technical details

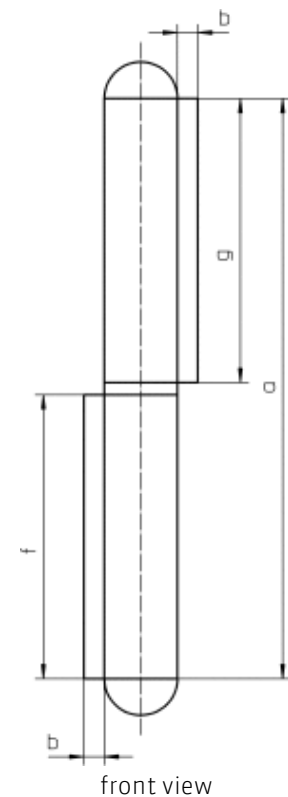
knuckle length	80,0 mm
h x b frame leaf	40,0 x 5,0 mm
knuckle diameter	15,0 mm
material thickness	3,0 mm
h x b door leaf	40,0 x 5,0 mm
pin diameter	9,0 mm

Note

Equipped with fixed, galvanized washered pin (washer 2 mm high) and galvanized tip.

Items (DIN reference: DIN right and left hand)

Finish(es)	steel self colour
packing unit	pack of 20
item number	5 140626 0 00207



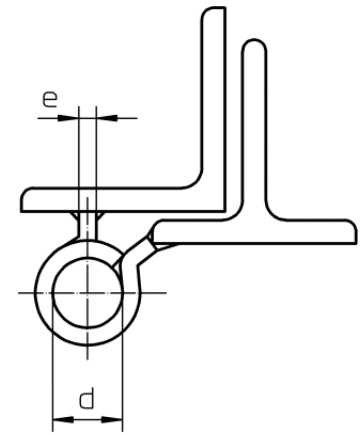
SIMONSWERK

METAL CONSTRUCTIONS

KO 6 80x9x3

2-part weld-on hinge for steel doors and steel windows

hinge



cross section