

# TABLE OF PROFILES



**TESTED &  
APPROVED**



See the page corresponding for each profile to obtain the technical specifications.

	Performance	Tested & approved	Part number	Type of mounting	Thickness of glass	Page
			<b>8050</b> 0080RAIL50	Floor	11.5 > 13.5 mm	12
			<b>8050</b> 0080RAIL50	On acroterion	11.5 > 13.5 mm	16
			<b>7017</b> 0070RAIL17	Offset floor, inverted offset	12 > 25.52 mm	20
			<b>7030</b> 0070RAIL30	Floor, build in slab	12 > 25.52 mm	24
			<b>7010</b> 0070RAIL10	Floor, build in slab	12 > 25.52 mm	28
			<b>7015</b> 0070RAIL15	Offset floor	12 > 25.52 mm	32
			<b>7018</b> 0070RAIL18	Floor	24 > 34 mm	36
			<b>7018L</b> 0070RAIL18L	Offset floor	24 > 34 mm	40
			<b>7019</b> 0070RAIL19	Floor	12 > 25.52 mm	44

FLOOR MOUNTING

# PROFILE 8050



THICKNESS OF GLASS  
**11.5 > 13.5 mm**

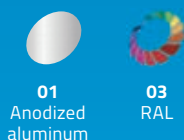


APPLICATION | **RESIDENTIAL** |

COMPATIBILITY OF WEDGES  
**Double Side**



POSSIBLE FINISHES



ADJUSTMENT OF GLASS  
**+ or - 15 mm**

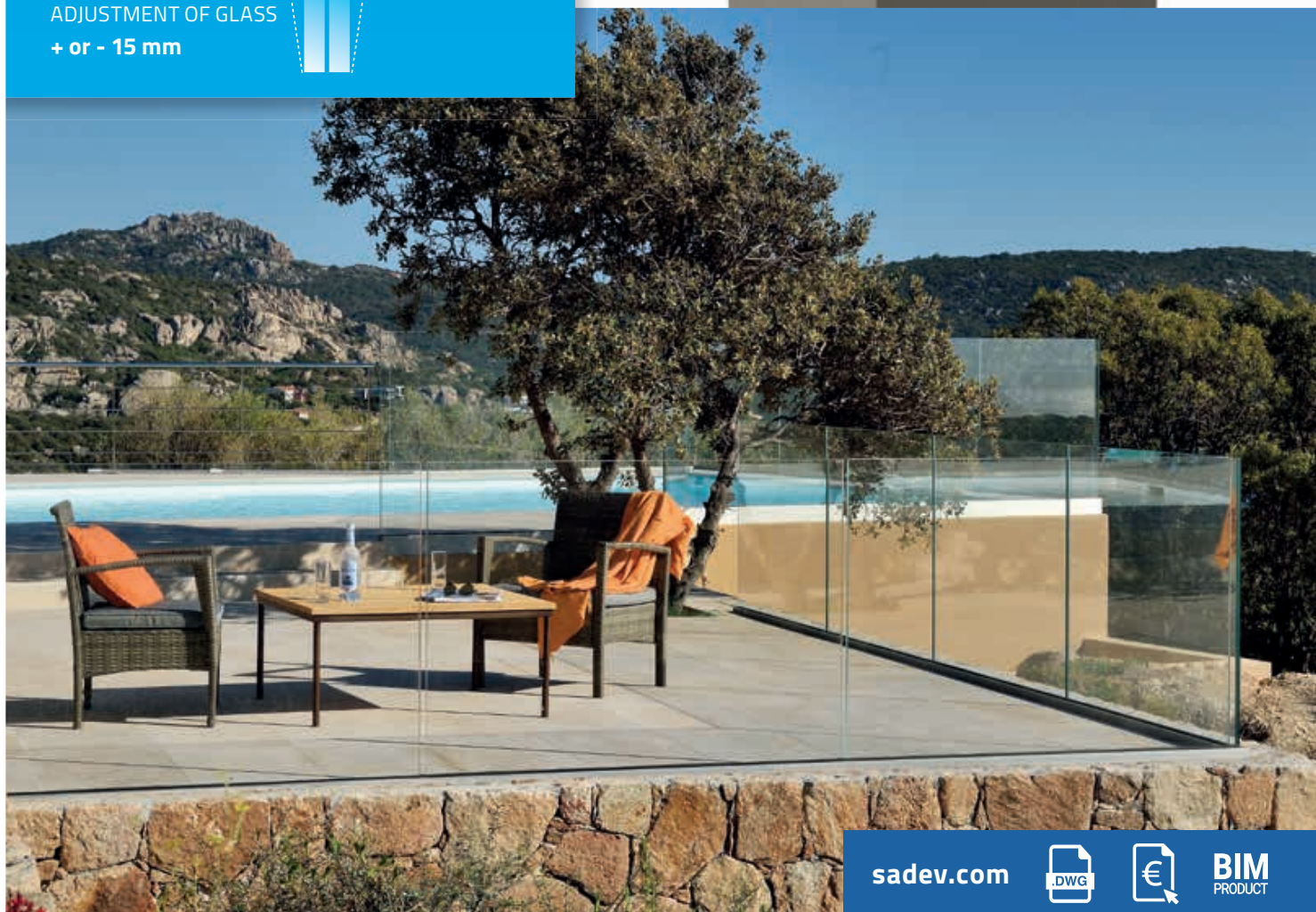


## TESTED & APPROVED



All the elements compatible with the  
**8050 PROFILE** can be found in this section

**WEDGES, CLADDINGS & ACCESSORIES > p.96**



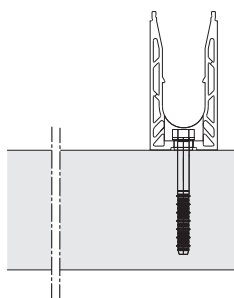
sadev.com



**BIM**  
PRODUCT

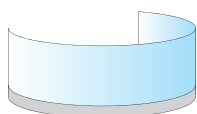
► Reference **0080RAIL50**

## TYPE OF USE

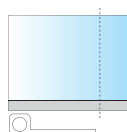


FLOOR MOUNTING

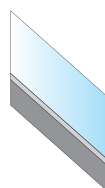
## DIFFERENT SPECIFICITIES



CURVED




MADE TO MEASURE



INCLINE

## TECHNICAL SPECIFICATION AND INTERNATIONAL CERTIFICATION

Solutions tested according to regulations of different countries  can be found in the country performance guide.

# FLOOR MOUNTING PROFILE 8050



THICKNESS OF GLASS  
11.5 > 13.5 mm

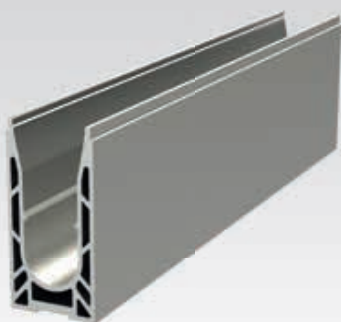
► Reference **0080RAIL50**



**TESTED & APPROVED**



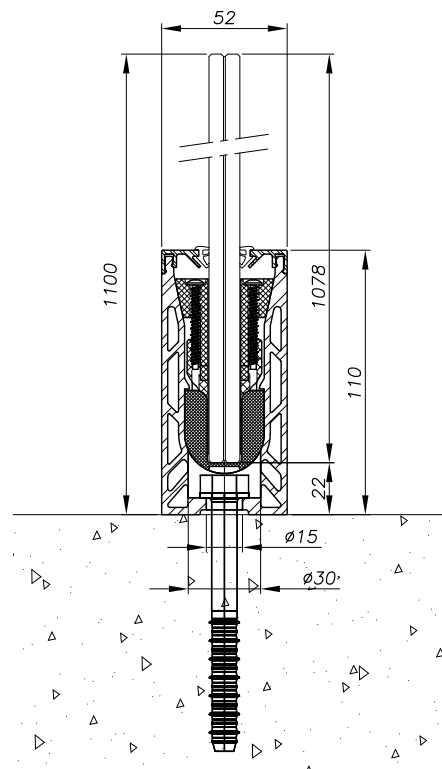
**6.6 tempered  
laminated**



## TECHNICAL CHARACTERISTICS

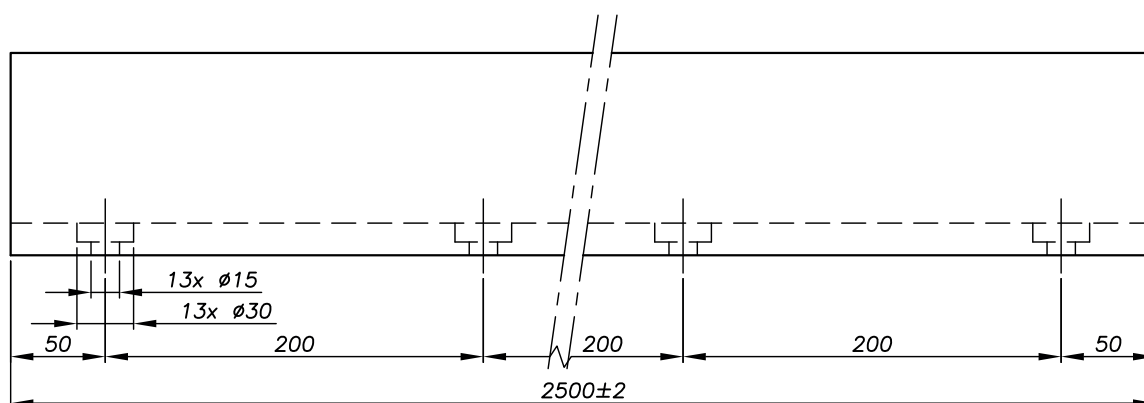
Length	2 500 / 5 000 mm (on request)
Width	52 mm
Height of profile	107 mm
Material	Aluminum
Type of application	Residential
Type of mounting	Floor
Thickness of glass	11.5 > 13.5 mm
Height of guardrail	Standard: 1 100 mm
Profile finish	Anodized aluminum , RAL
Fixing the profile	From 200 to 400 mm depending on the characteristics of your project.

**FOR MORE INFORMATION  
ON ANCHORING THE PROFILE:**  
see our country performance guide  
or the Technical Advice for each profile.

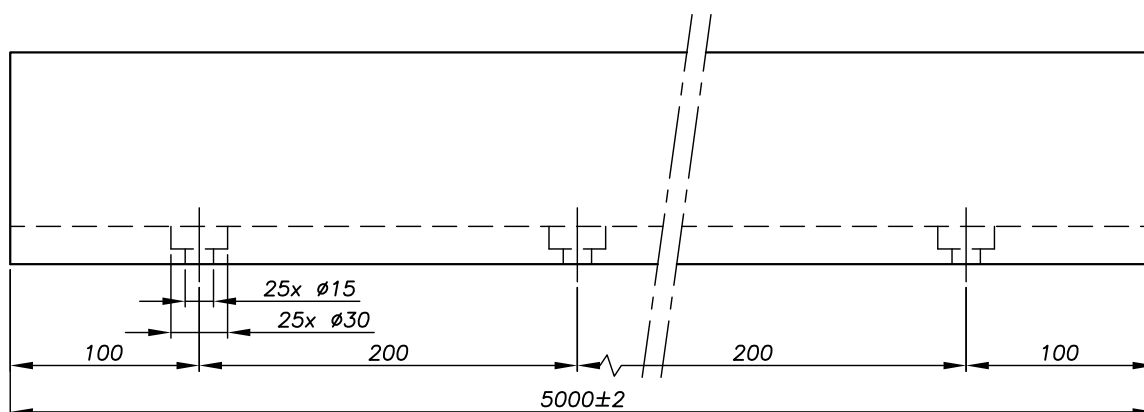


## TECHNICAL PLANS

### ► 2 500 mm - Reference 0080RAIL50



### ► 5 000 mm - Reference 0080RAIL60 (on request)



## DRAINAGE & EXPANSION

For more details, see **page 50**



PARAPET MOUNTING

PERFORMANCE

3 kN

PROFILE  
**8050**



THICKNESS OF GLASS

11.5 > 13.5 mm



APPLICATION | **RESIDENTIAL** | **PUBLIC** |

COMPATIBILITY OF WEDGES

**Double Side**



POSSIBLE FINISHES



**01**  
Anodized  
aluminum



**03**  
RAL

ADJUSTMENT OF GLASS

+ or - 15 mm



**TESTED & APPROVED**



All the elements compatible with the  
**8050 PROFILE** can be found in this section

**WEDGES, CLADDINGS & ACCESSORIES > p.96**



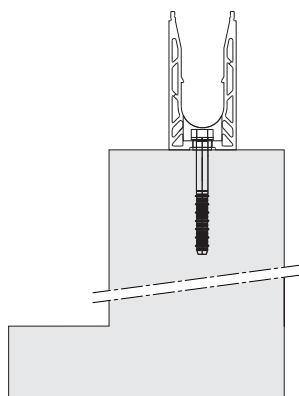
sadev.com



**BIM**  
PRODUCT

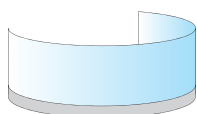
► Reference **0080RAIL50**

## TYPE OF USE

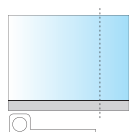


MOUNTING ON ACROTERION

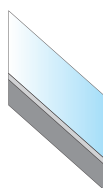
## DIFFERENT SPECIFICITIES



CURVED




MADE TO MEASURE



INCLINE

## TECHNICAL SPECIFICATION AND INTERNATIONAL CERTIFICATION

Solutions tested according to regulations of different countries  can be found in the country performance guide.

# PARAPET MOUNTING PROFILE 8050



THICKNESS OF GLASS  
11.5 > 13.5 mm

► Reference **0080RAIL50**

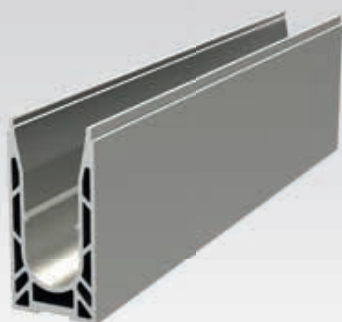


**TESTED & APPROVED**



ONLY SOLUTION

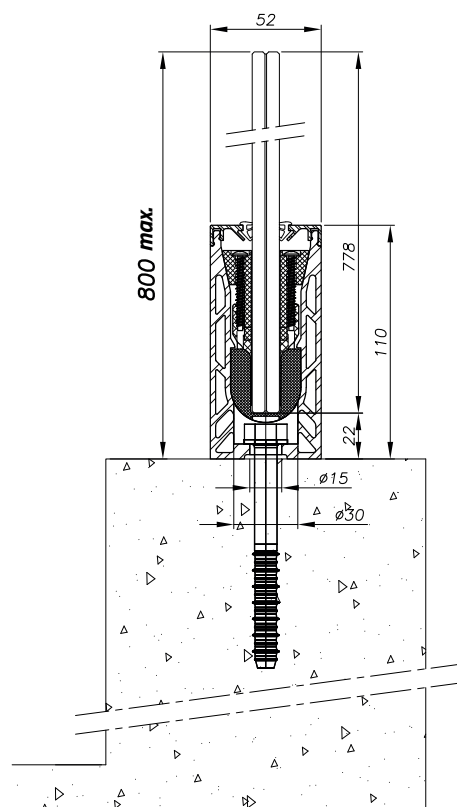
**6.6 tempered approved  
for acroterion**  
*(public application)*



## TECHNICAL CHARACTERISTICS

Length	2 500 / 5 000 mm (on request)
Width	52 mm
Height of profile	107 mm
Material	Aluminum
Type of application	Residential / public
Type of mounting	Acroterion
Thickness of glass	11.5 > 13.5 mm
Height of guardrail	800 mm max.
Profile finish	Anodized aluminum , RAL
Fixing the profile	From 200 to 400 mm depending on the requirements of your project.

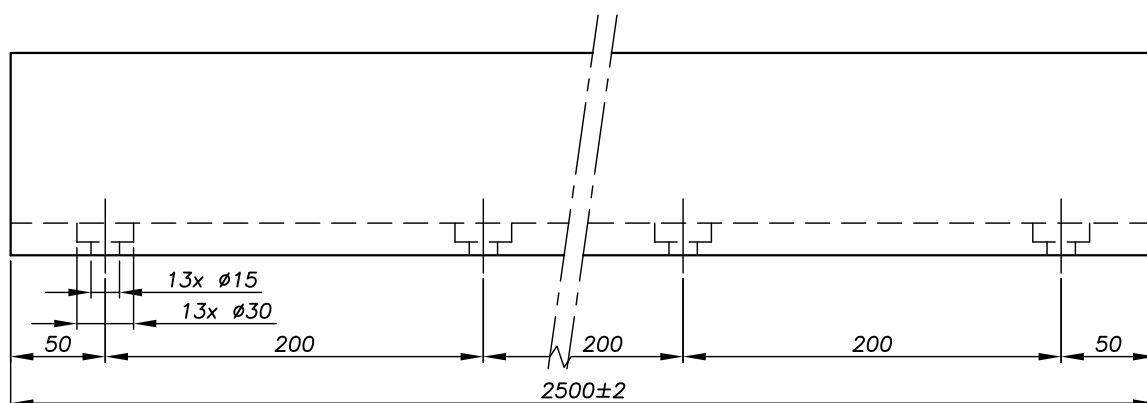
**FOR MORE INFORMATION  
ON ANCHORING THE PROFILE:**  
see our country performance guide  
or the Technical Advice for each profile.



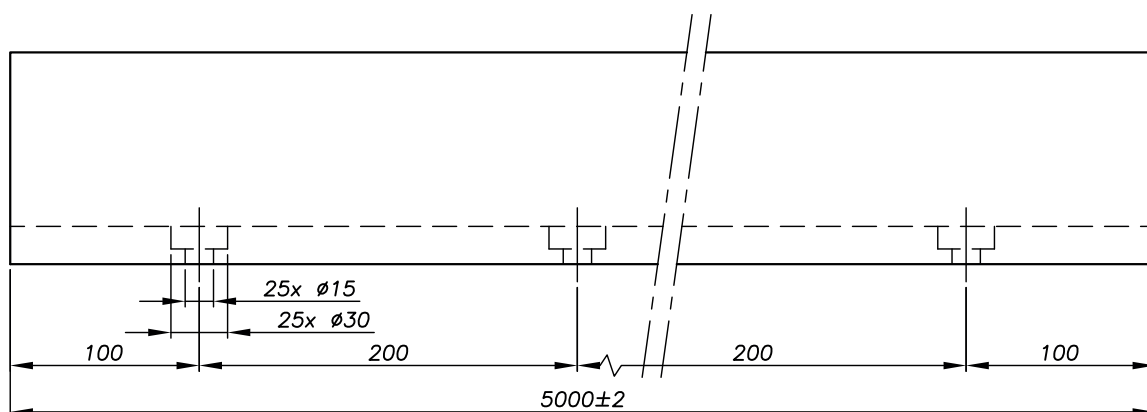


## TECHNICAL PLANS

### ► 2 500 mm - Reference 0080RAIL50



### ► 5 000 mm - Reference 0080RAIL60 (on request)



## DRAINAGE & EXPANSION

For more details, see **page 50**

FLOOR MOUNTING

PERFORMANCE

3 kN

PROFILE  
**7017**



THICKNESS OF GLASS

12 > 25.52 mm



APPLICATION | **RESIDENTIAL** | **PUBLIC** |

COMPATIBILITY OF WEDGES  
**One Side & Double Side**



POSSIBLE FINISHES



00  
Raw  
aluminum



01  
Anodized  
aluminum



03  
RAL

ADJUSTMENT OF GLASS  
+ or - 15 mm



**TESTED & APPROVED**



All the elements compatible with the  
**7017 PROFILE** can be found in this section

**WEDGES, CLADDINGS & ACCESSORIES > p.96**



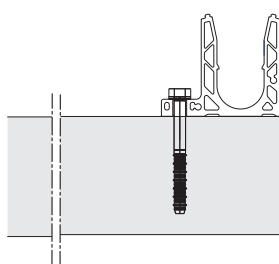
sadev.com



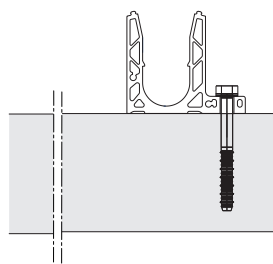
**BIM**  
PRODUCT

► Reference **0070RAIL17**

## TYPE OF USE

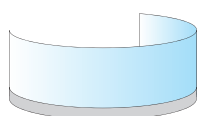


MOUNTING OFFSET FLOOR

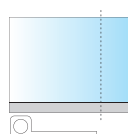


MOUNTING INVERTED OFFSET FLOOR

## DIFFERENT SPECIFICITIES




CURVED



MADE TO MEASURE

## TECHNICAL SPECIFICATION AND INTERNATIONAL CERTIFICATION

Solutions tested according to regulations of different countries  can be found in the country performance guide.

FLOOR MOUNTING

# PROFILE 7017



THICKNESS OF GLASS  
12 > 25.52 mm

► Reference **0070RAIL17**



**TESTED & APPROVED**



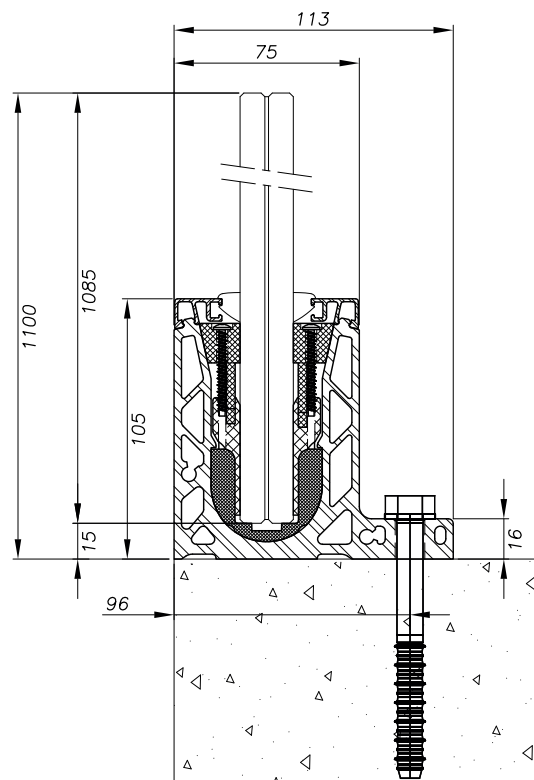
COMPACT  
Special slab edge



## TECHNICAL CHARACTERISTICS

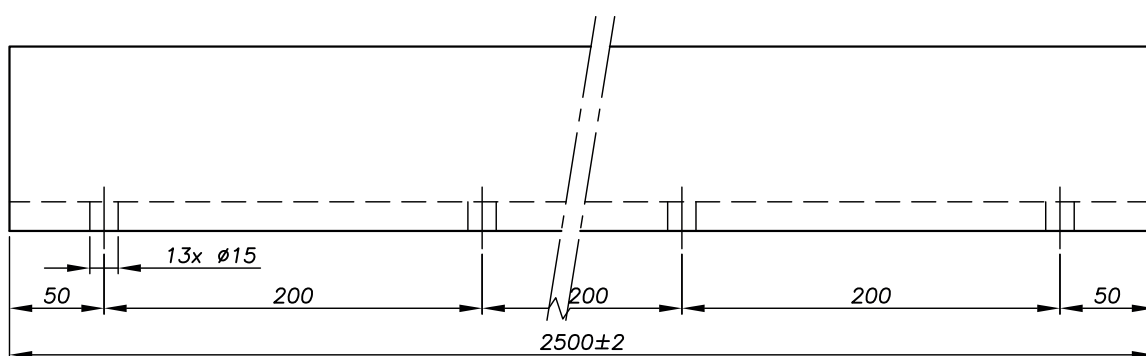
Length	2 500/5 000 mm (on request)
Width	113 mm
Height of profile	98 mm
Material	Aluminum
Type of application	Residential /public
Type of mounting	Offset floor / inverted offset floor
Thickness of glass	12 > 25.52 mm
Height of guardrail	Standard: 1 100 mm <b>Different height on request</b>
Profile finish	Anodized aluminum, raw, RAL
Fixing the profile	Every 400 mm according to the requirements of your project.

**FOR MORE INFORMATION  
ON ANCHORING THE PROFILE:**  
see our country performance guide  
or the Technical Advice for each profile.

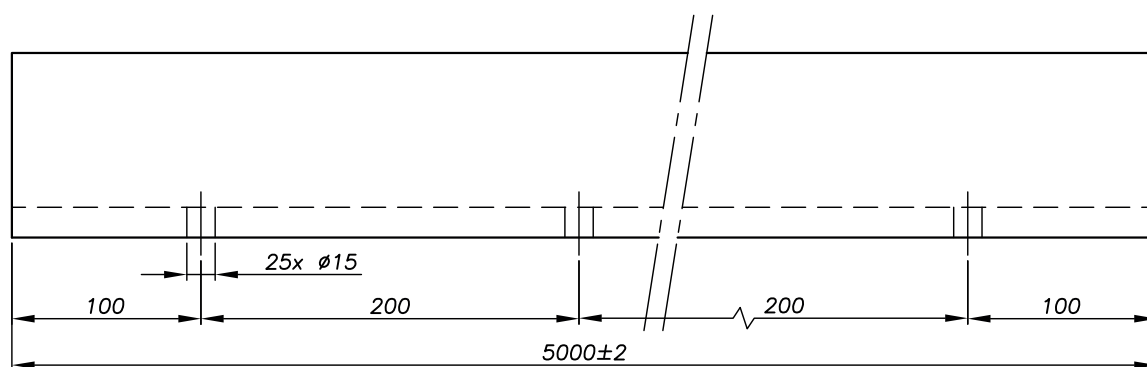


## TECHNICAL PLANS

### ► 2 500 mm - Reference 0070RAIL17



### ► 5 000 mm - Reference 0070RAIL27 (on request)



## DRAINAGE & EXPANSION

For more details, see **page 50**



FLOOR MOUNTING

# PROFILE 7030



THICKNESS OF GLASS  
12 > 25.52 mm



APPLICATION | **RESIDENTIAL** | **PUBLIC** |

COMPATIBILITY OF WEDGES  
**One Side & Double Side**



POSSIBLE FINISHES

**01**  
Anodized  
aluminum

**02**  
Brushed  
stainless  
steel effect

**03**  
RAL

ADJUSTMENT OF GLASS  
+ or - 15 mm



## TESTED & APPROVED



All the elements compatible with the  
**7030 PROFILE** can be found in this section

**WEDGES, CLADDINGS & ACCESSORIES > p.96**



sadev.com

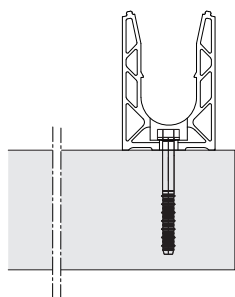


**BIM**  
PRODUCT

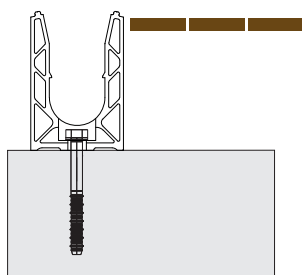


► Reference **0070RAIL30**

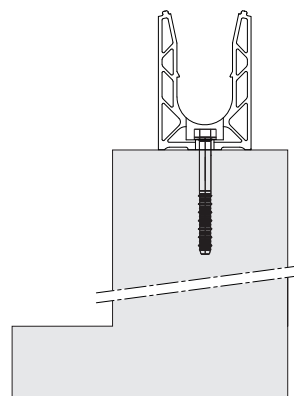
## TYPE OF USE



FLOOR MOUNTING

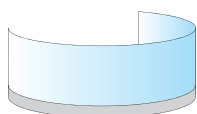


BUILT-IN MOUNTING

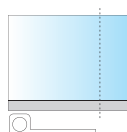


MOUNTING ON ACROTHERION

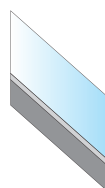
## DIFFERENT SPECIFICITIES



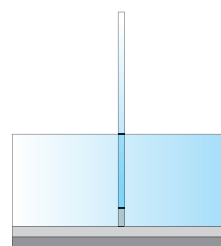
CURVED



MADE TO MEASURE




INCLINE



SEPARATOR

## TECHNICAL SPECIFICATION AND INTERNATIONAL CERTIFICATION

Solutions tested according to regulations of different countries  can be found in the country performance guide.

# FLOOR MOUNTING PROFILE 7030



THICKNESS OF GLASS  
12 > 25.52 mm

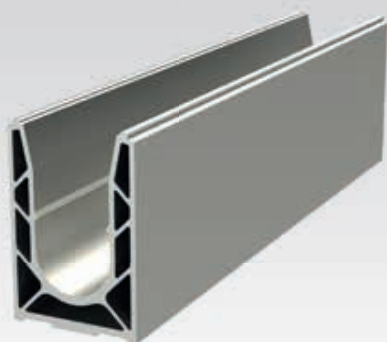
► Reference **0070RAIL30**



**TESTED & APPROVED**



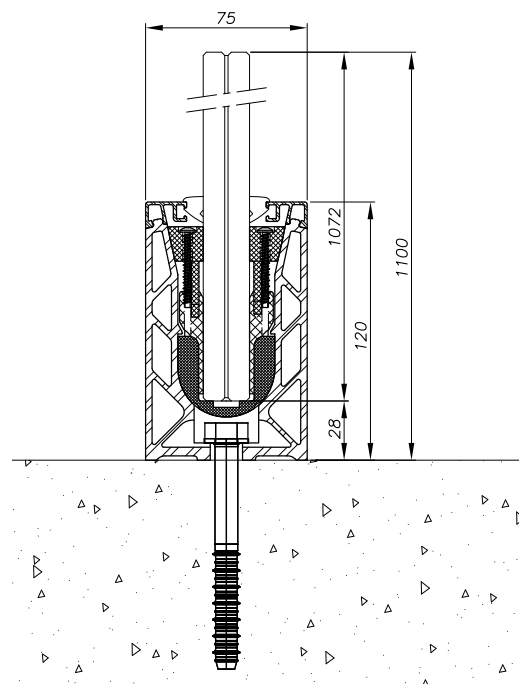
**Profile suitable for curving**



## TECHNICAL CHARACTERISTICS

Length	2 500 mm / 5 000 mm
Width	75 mm
Height of profile	112 mm
Material	Aluminum
Type of application	Residential / public
Type of mounting	Floor, built-in-slab, on acroterion
Thickness of glass	12 > 25.52 mm
Height of guardrail	Standard: 1 100 mm <b>Different height on request</b>
Profile finish	Anodized aluminum, brushed stainless steel effect, RAL
Fixing the profile	Every 200 to 400 mm depending on the requirements of your project.

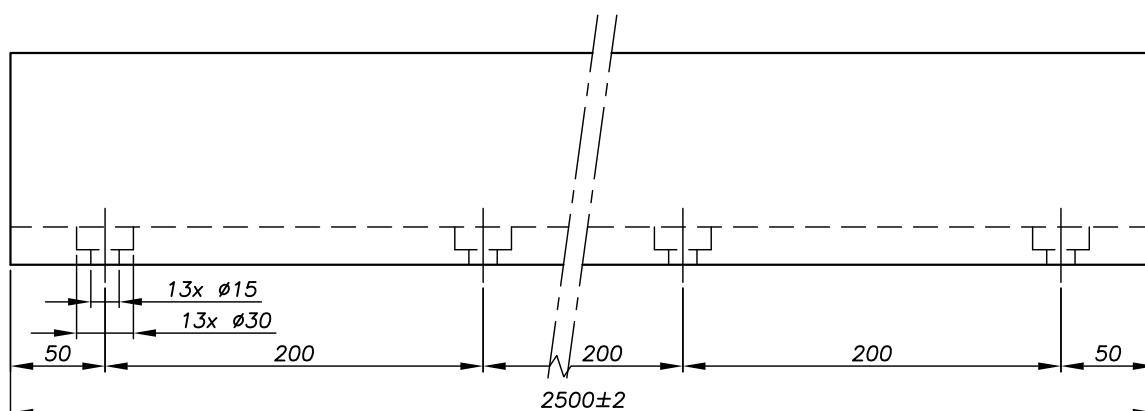
**FOR MORE INFORMATION  
ON ANCHORING THE PROFILE:**  
see our country performance guide  
or the Technical Advice for each profile.



## TECHNICAL PLANS

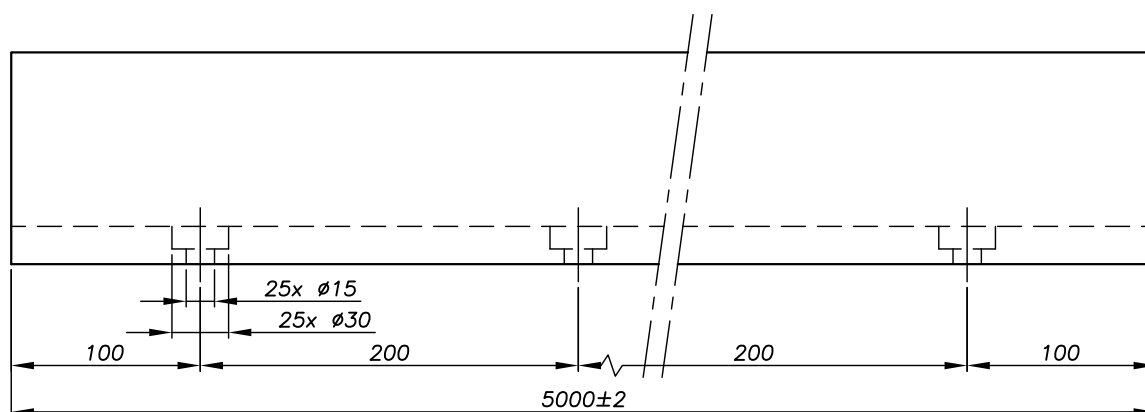
► 2 500 mm - Reference 0070RAIL30

► **2 500 mm - Undrilled profile** - Reference **0070RAIL204**



► 5 000 mm - Reference 0070RAIL40

► **5 000 mm - Undrilled profile** - Reference **0070RAIL504**



## DRAINAGE & EXPANSION

For more details, see **page 50**

FLOOR MOUNTING

# PROFILE 7010



THICKNESS OF GLASS  
12 > 25.25 mm



APPLICATION | **RESIDENTIAL** | **PUBLIC** |

COMPATIBILITY OF WEDGES  
**One Side & Double Side**



POSSIBLE FINISHES



**00**  
Raw  
aluminum



**01**  
Anodized  
aluminum

ADJUSTMENT OF GLASS  
**+ or - 15 mm**



## TESTED & APPROVED



All the elements compatible with the  
**7010 PROFILE** can be found in this section

**WEDGES, CLADDINGS & ACCESSORIES > p.96**



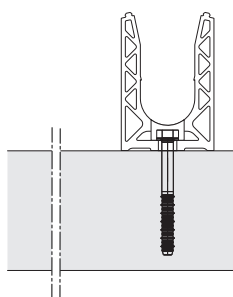
sadev.com



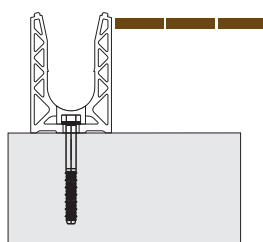
**BIM**  
PRODUCT

► Reference **0070RAIL10**

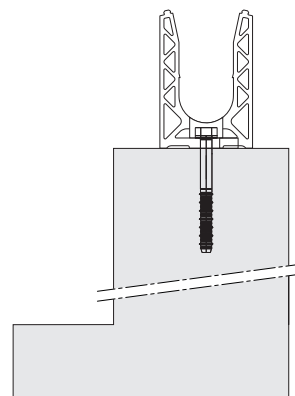
## TYPE OF USE



FLOOR MOUNTING

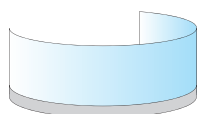


BUILT-IN-SLAB MOUNTING

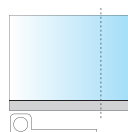


MOUNTING ON ACROTERION

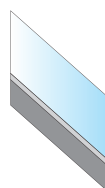
## DIFFERENT SPECIFICITIES



CURVED



MADE TO MEASURE




INCLINE



HIGH LEVEL

## TECHNICAL SPECIFICATION AND INTERNATIONAL CERTIFICATION

Solutions tested according to regulations of different countries  can be found in the country performance guide.

# FLOOR MOUNTING PROFILE 7010



THICKNESS OF GLASS  
12 > 25.25 mm

► Reference **0070RAIL10**



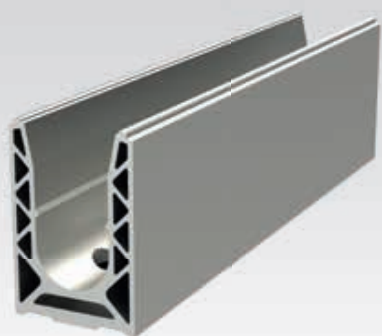
**TESTED & APPROVED**



**HIGH PERFORMANCE  
PRODUCT**

**Material and specific  
treatment**

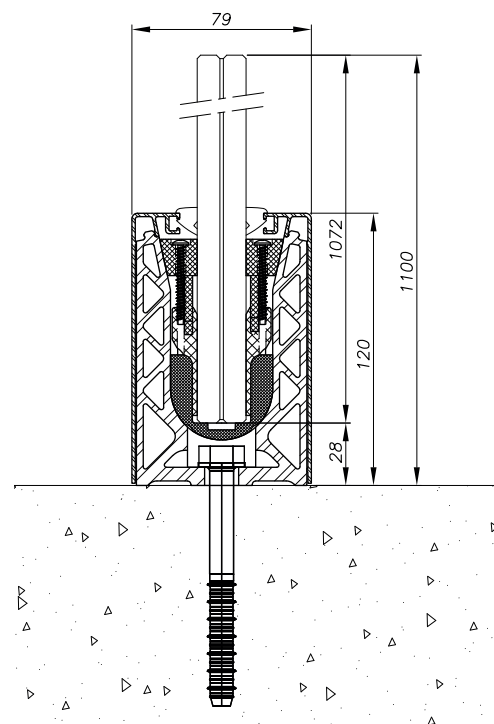
**Flexible and adaptable**



## TECHNICAL CHARACTERISTICS

Length	2 500 mm / 5 000 mm
Width	75 mm
Height of profile	112 mm
Material	Aluminum
Type of application	Residential / public
Type of mounting	Floor
Thickness of glass	12 > 25.52 mm
Height of guardrail	Standard: 1 500 mm <b>Different height on request</b>
Profile finish	Anodized aluminum, raw
Fixing the profile	From 200 to 800 mm depending on the requirements of your project.

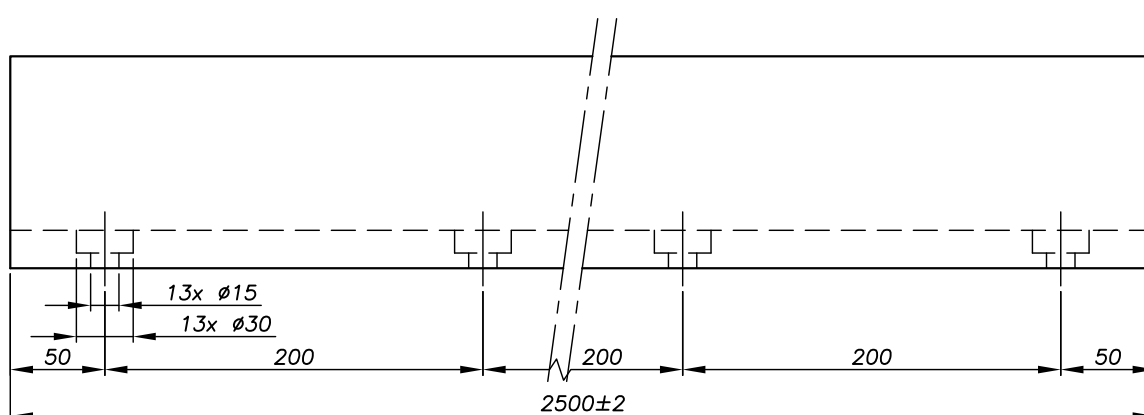
**FOR MORE INFORMATION  
ON ANCHORING THE PROFILE:**  
see our country performance guide  
or the Technical Advice for each profile.



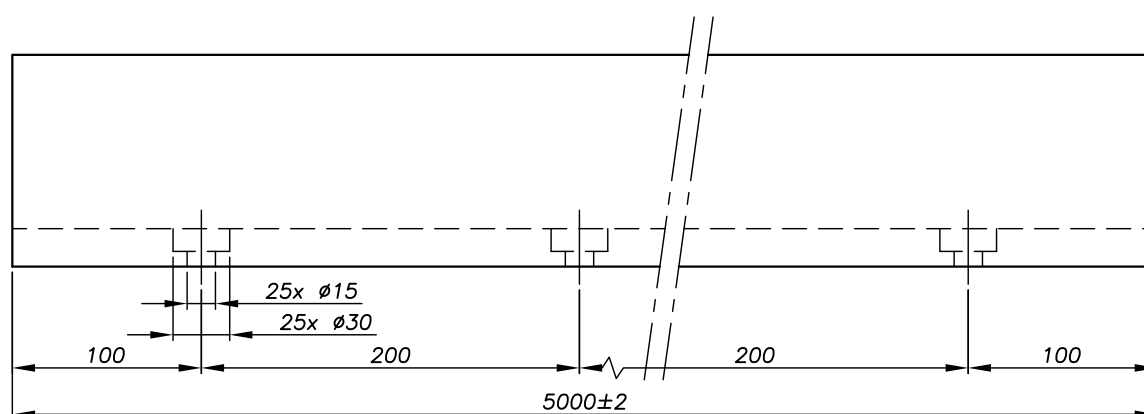


## TECHNICAL PLANS

- **2 500 mm** - Reference **0070RAIL10**
- **2 500 mm** - **Undrilled profile** - Reference **0070RAIL201**



- 5 000 mm - Reference **0070RAIL20**
- 5 000 mm - **Undrilled profile** - Reference **0070RAIL501**



## DRAINAGE & EXPANSION

For more details, see **page 50**

FLOOR MOUNTING

# PROFILE 7015



THICKNESS OF GLASS

12 > 25.25 mm



APPLICATION | **RESIDENTIAL** | **PUBLIC** |

COMPATIBILITY OF WEDGES  
**One Side & Double Side**



POSSIBLE FINISHES



**01**  
Anodized  
aluminum



**03**  
RAL

ADJUSTMENT OF GLASS  
+ or - 15 mm



## TESTED & APPROVED



All the elements compatible with the  
**7015 PROFILE** can be found in this section

**WEDGES, CLADDINGS & ACCESSORIES > p.96**



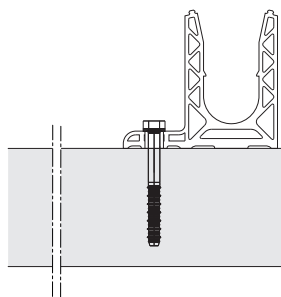
sadev.com



**BIM**  
PRODUCT

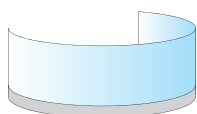
► Reference **0070RAIL15**

## TYPE OF USE

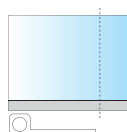


OFFSET FLOOR MOUNTING

## DIFFERENT SPECIFICITIES



CURVED




MADE TO MEASURE



HIGH LEVEL

## TECHNICAL SPECIFICATION AND INTERNATIONAL CERTIFICATION

Solutions tested according to regulations of different countries  can be found in the country performance guide.

FLOOR MOUNTING

# PROFILE 7015



THICKNESS OF GLASS  
12 > 25.25 mm

► Reference **0070RAIL15**



**TESTED & APPROVED**

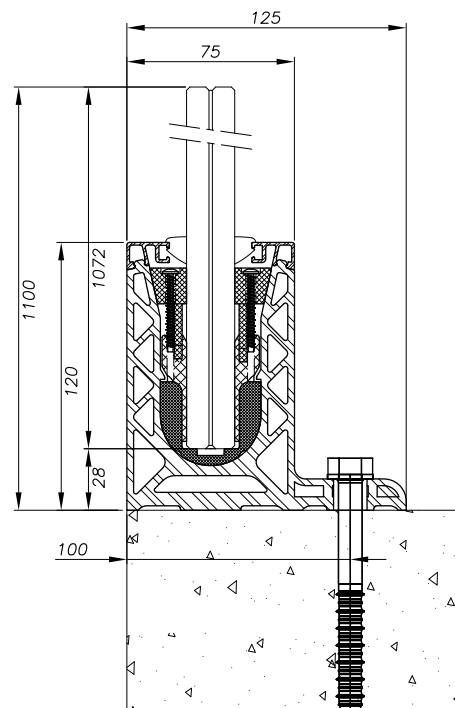


OFFSET PROFILE  
**High performance**



## TECHNICAL CHARACTERISTICS

Length	2 500 mm/5 000 mm (on request)
Width	125 mm
Height of profile	112 mm
Material	Aluminum
Type of application	Residential /public
Type of mounting	Offset floor
Thickness of glass	12 > 25.52 mm
Height of guardrail	Standard: 1 500 mm <b>Different height on request</b>
Profile finish	Anodized aluminum , RAL
Fixing the profile	From 200 to 600 mm depending on the requirements of your project.

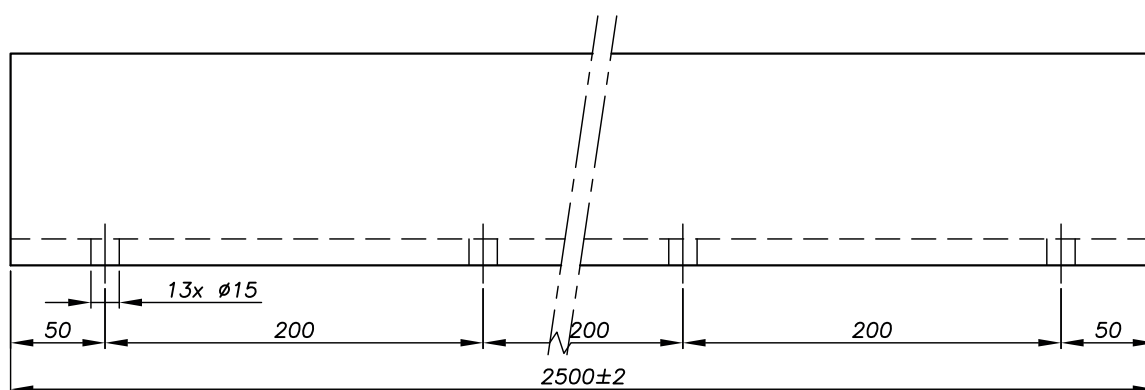


**FOR MORE INFORMATION  
ON ANCHORING THE PROFILE:**  
see our country performance guide  
or the Technical Advice for each profile.

## TECHNICAL PLANS

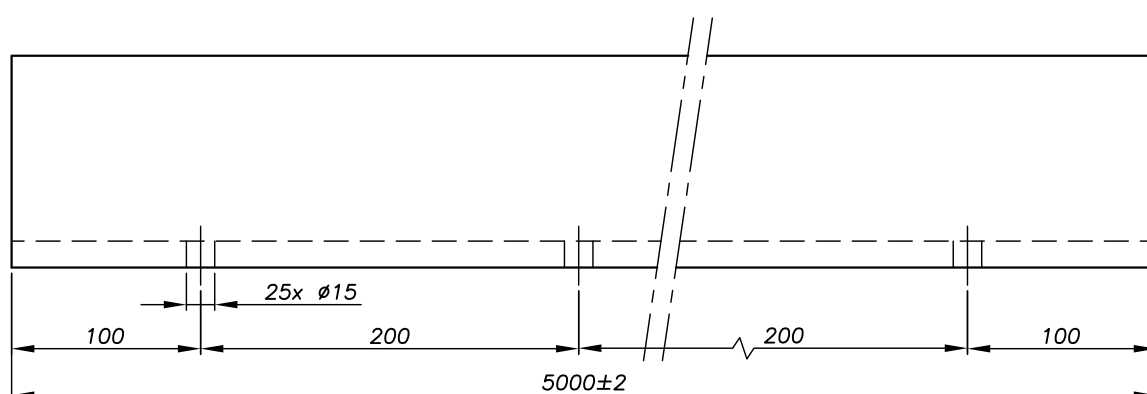
### ► 2 500 mm - Reference 0070RAIL15

### ► 2 500 mm - Undrilled profile - Reference 0070RAIL205



### ► 5 000 mm - Reference 0070RAIL25 (on request)

### ► 5 000 mm - Undrilled profile - Reference 0070RAIL505



## DRAINAGE & EXPANSION

For more details, see **page 50**



FLOOR MOUNTING

# PROFILE 7018



THICKNESS OF GLASS  
**24 > 34 mm**



APPLICATION | **RESIDENTIAL** | **PUBLIC** |  
**STADIUM**

COMPATIBILITY OF WEDGES  
**Double Side**



POSSIBLE FINISHES



**00**  
Raw  
aluminum



**01**  
Anodized  
aluminum



**03**  
RAL

ADJUSTMENT OF GLASS  
**+ or - 15 mm**

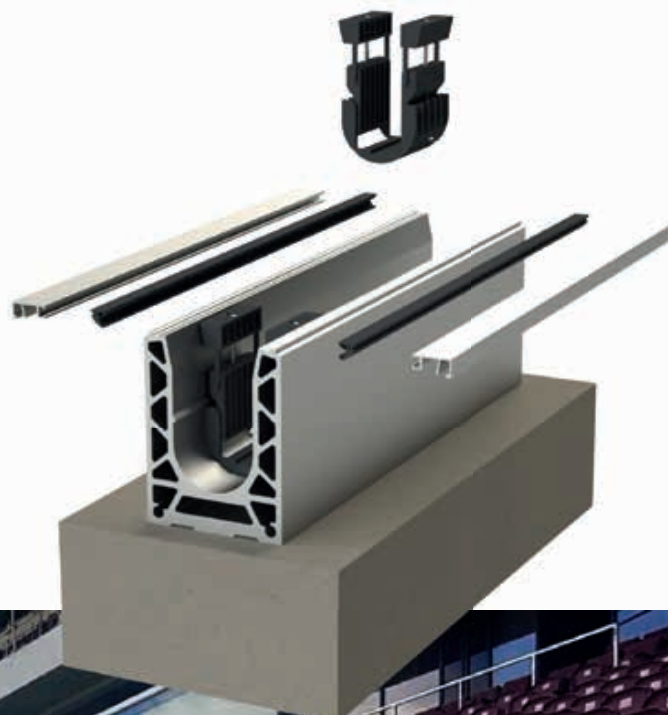


## TESTED & APPROVED



All the elements compatible with the  
**7018 PROFILE** can be found in this section

**WEDGES, CLADDINGS & ACCESSORIES > p.96**



sadev.com

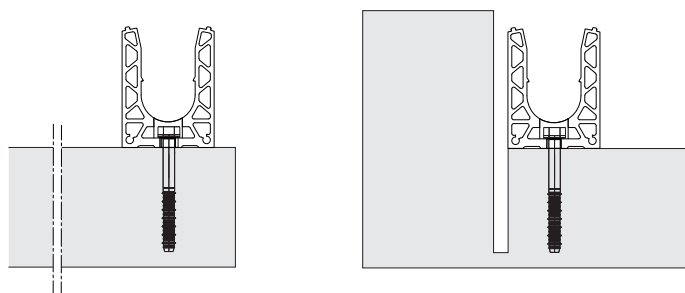


**BIM**  
PRODUCT



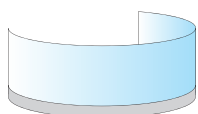
► Reference **0070RAIL18**

## TYPE OF USE

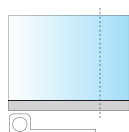


FLOOR MOUNTING

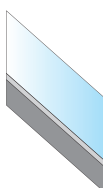
## DIFFERENT SPECIFICITIES



CURVED



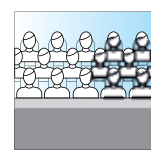
MADE TO MEASURE



INCLINE




HIGH LEVEL



HIGH PERFORMANCE

## TECHNICAL SPECIFICATION AND INTERNATIONAL CERTIFICATION

Solutions tested according to regulations of different countries  can be found in the country performance guide.

# FLOOR MOUNTING PROFILE 7018



THICKNESS OF GLASS  
24 > 34 mm

► Reference **0070RAIL18**



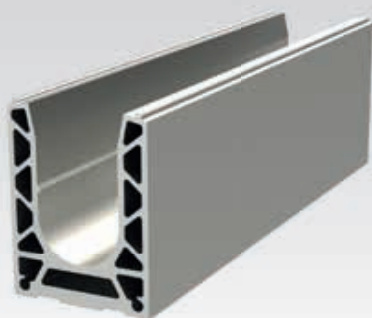
**TESTED & APPROVED**



**HIGH PERFORMANCE**

**Application stadium C5 / UEFA  
In 15.15 PVB**

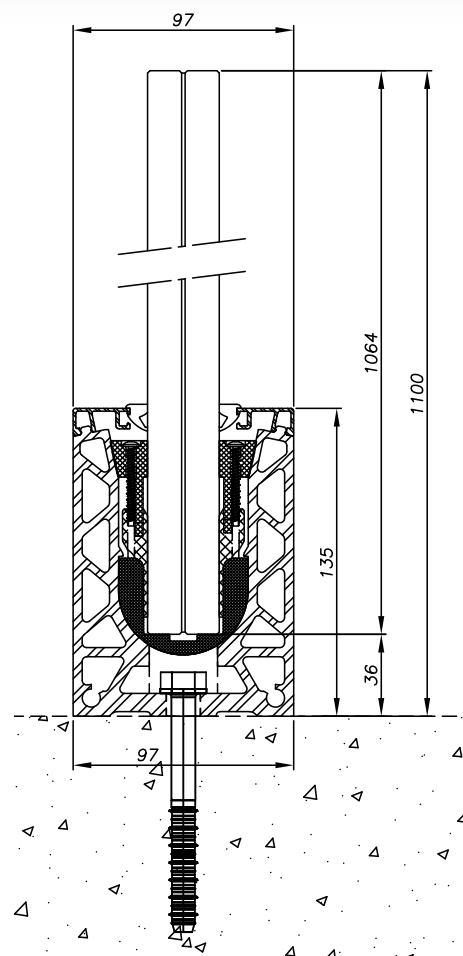
**Up to 10.10.10 (tri-fold)**



## TECHNICAL CHARACTERISTICS

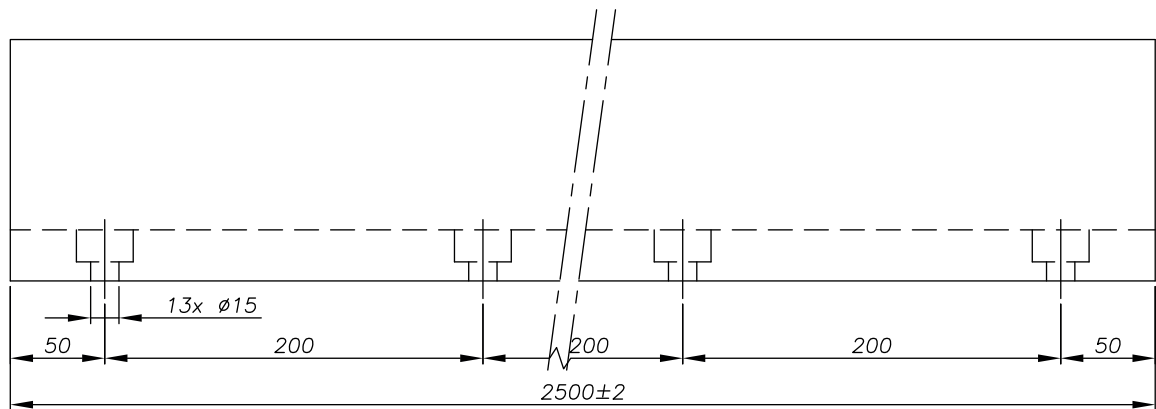
<b>Length</b>	2 500 mm / 5 000 mm (on request)
<b>Width</b>	97 mm
<b>Height of profile</b>	128 mm
<b>Material</b>	Aluminum
<b>Type of application</b>	Residential / public / Stadium
<b>Type of mounting</b>	Floor
<b>Thickness of glass</b>	24 > 34 mm
<b>Height of guardrail</b>	Standard: 2 100 mm <b>Different height on request</b>
<b>Profile finish</b>	Anodized aluminum, raw, RAL
<b>Fixing the profile</b>	From 200 to 400 mm depending on the characteristics of your project.

**FOR MORE INFORMATION  
ON ANCHORING THE PROFILE:**  
see our country performance guide  
or the Technical Advice for each profile.

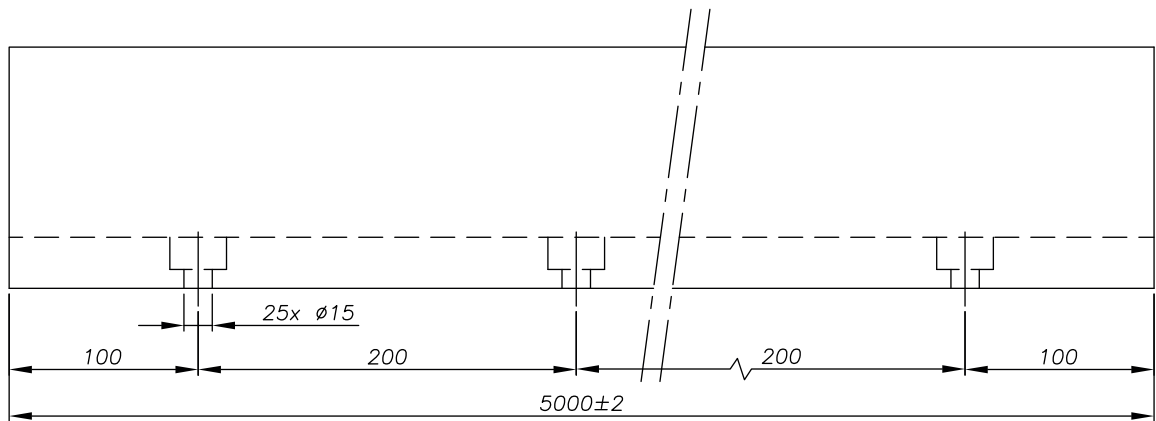


TECHNICAL PLANS

► 2 500 mm - Reference 0070RAIL18



► 5 000 mm - Reference 0070RAIL28 (on request)



DRAINAGE & EXPANSION

For more details, see **page 50**

FLOOR MOUNTING

# PROFILE 7018L



THICKNESS OF GLASS

24 > 34 mm



APPLICATION

**RESIDENTIAL** | **PUBLIC**  
**STADIUM**

COMPATIBILITY OF WEDGES

**Double Side**



POSSIBLE FINISHES



**00**  
Raw  
aluminum



**01**  
Anodized  
aluminum



**03**  
RAL

ADJUSTMENT OF GLASS

+ or - 15 mm

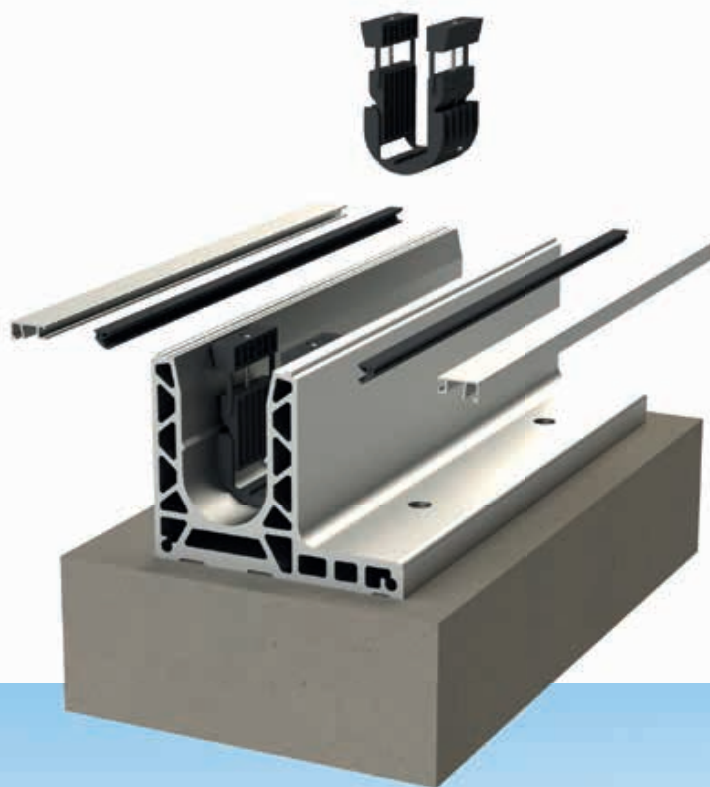


## TESTED & APPROVED



All the elements compatible with the  
**7018L PROFILE** can be found in this section

**WEDGES, CLADDINGS & ACCESSORIES > p.96**



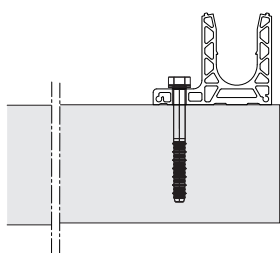
sadev.com



**BIM**  
PRODUCT

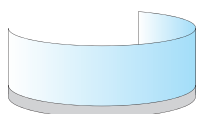
► Reference **0070RAIL18L**

## TYPE OF USE

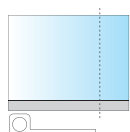


OFFSET FLOOR MOUNTING

## DIFFERENT SPECIFICITIES



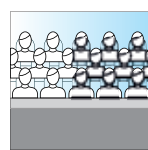
CURVED



MADE TO MEASURE




HIGH LEVEL



HIGH PERFORMANCE

## TECHNICAL SPECIFICATION AND INTERNATIONAL CERTIFICATION

Solutions tested according to regulations of different countries  can be found in the country performance guide.

# FLOOR MOUNTING PROFILE 7018L



THICKNESS OF GLASS  
24 > 34 mm

► Reference **0070RAIL18L**



**TESTED & APPROVED**



STADIUM  
APPLICATION

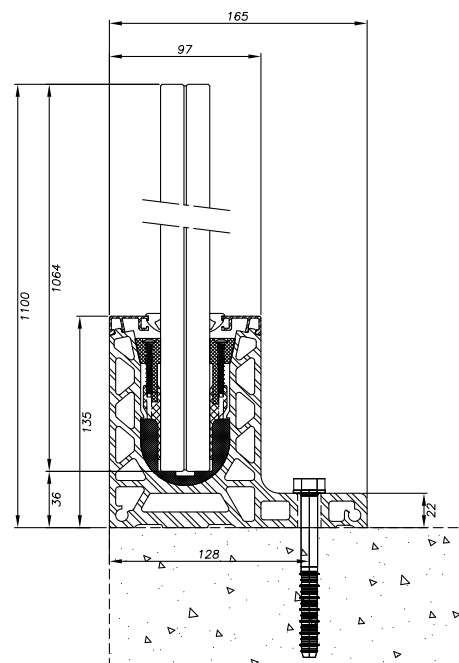
**Special slab edge**

**Up to 10.10.10 (tri-fold)**



## TECHNICAL CHARACTERISTICS

<b>Length</b>	2 500 mm / 5 000 mm (on request)
<b>Width</b>	165 mm
<b>Height of profile</b>	128 mm
<b>Material</b>	Aluminum
<b>Type of application</b>	Residential / public / Stadium
<b>Type of mounting</b>	Offset floor
<b>Thickness of glass</b>	24 > 34 mm
<b>Height of guardrail</b>	Standard: 2 100 mm
<b>Profile finish</b>	Anodized aluminum ,raw, RAL
<b>Fixing the profile</b>	From 200 to 400 mm depending on the characteristics of your project.

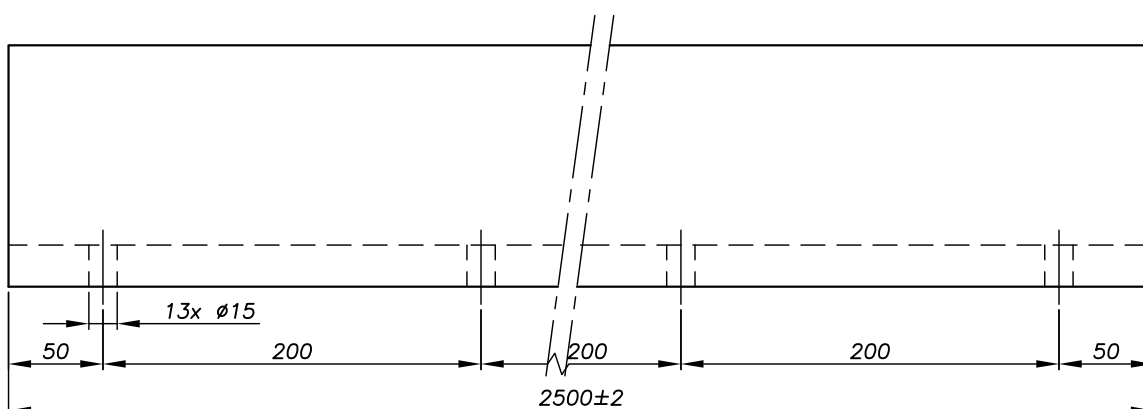


**FOR MORE INFORMATION  
ON ANCHORING THE PROFILE:**  
see our country performance guide  
or the Technical Advice for each profile.

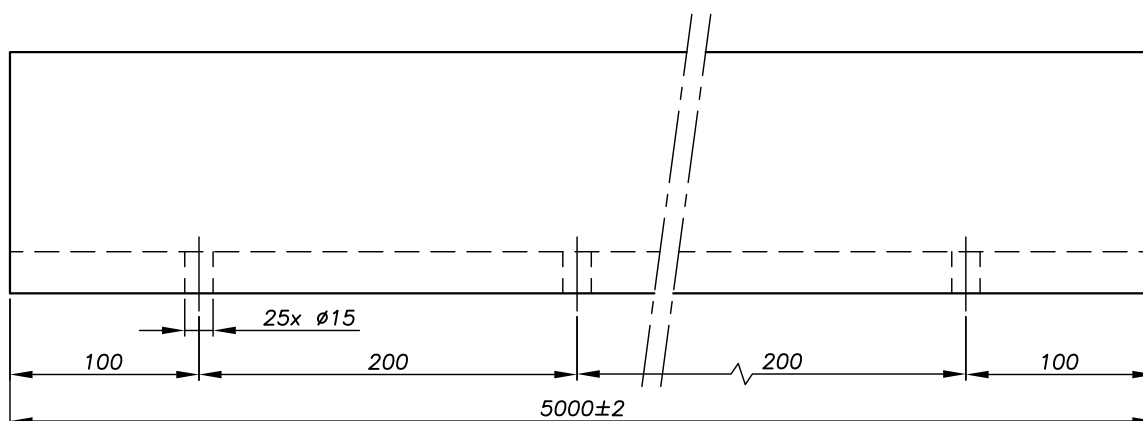


## TECHNICAL PLANS

### ► 2 500 mm - Reference 0070RAIL18L



### ► 5 000 mm - Reference 0070RAIL28L (on request)



## DRAINAGE & EXPANSION

For more details, see **page 50**

FLOOR MOUNTING

# PROFILE 7019



THICKNESS OF GLASS  
12 > 25.52 mm



APPLICATION | **RESIDENTIAL** | **PUBLIC** |  
| **STADIUM** |

COMPATIBILITY OF WEDGES  
**One Side & Double Side**



POSSIBLE FINISHES



**00**  
Raw  
aluminum



**01**  
Anodized  
aluminum

ADJUSTMENT OF GLASS  
+ or - 15 mm



## TESTED & APPROVED



All the elements compatible with the  
**7019 PROFILE** can be found in this section

**WEDGES, CLADDINGS & ACCESSORIES > p.96**



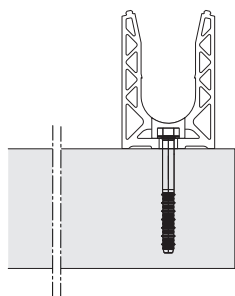
sadev.com



**BIM**  
PRODUCT

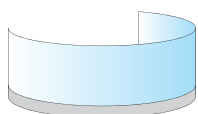
► Reference **0070RAIL19**

## TYPE OF USE

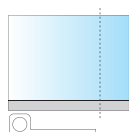


FLOOR MOUNTING

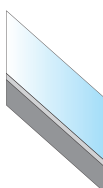
## DIFFERENT SPECIFICITIES



CURVED



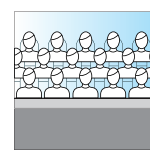
MADE TO MEASURE



INCLINE




HIGH LEVEL



HIGH PERFORMANCE

## TECHNICAL SPECIFICATION AND INTERNATIONAL CERTIFICATION

Solutions tested according to regulations of different countries  can be found in the country performance guide.

# FLOOR MOUNTING PROFILE 7019



THICKNESS OF GLASS  
12 > 25.25 mm

► Reference **0070RAIL19**



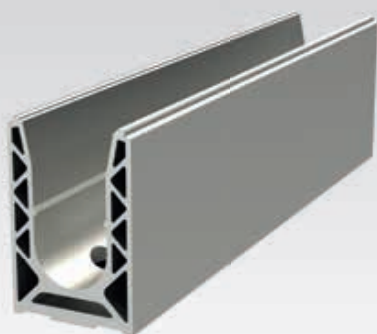
**TESTED & APPROVED**



**HIGH  
PERFORMANCE**

**Application STADIUM  
C5 / UEFA**

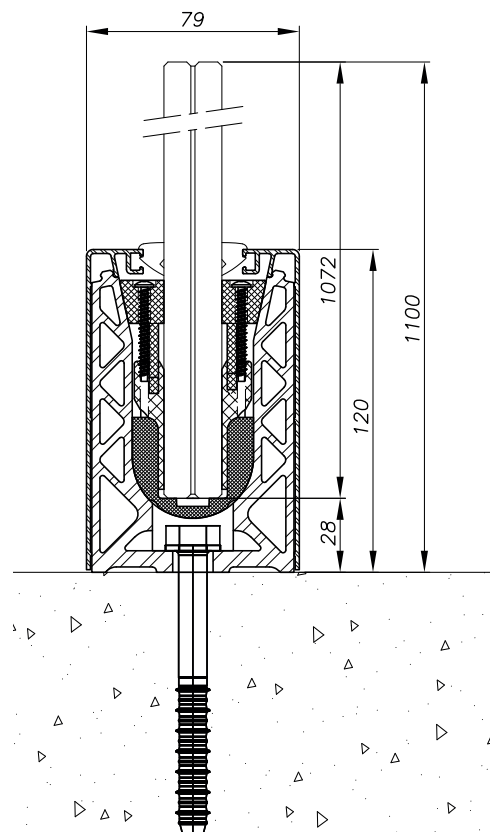
**In 12.12 SGP**



## TECHNICAL CHARACTERISTICS

Length	2 500 mm / 5 000 mm
Width	75 mm
Height of profile	112 mm
Material	Aluminum
Type of application	Residential / public / Stadium
Type of mounting	Floor
Thickness of glass	12 > 25.52 mm
Height of guardrail	Standard: 2 100 mm
Profile finish	Anodized aluminum ,raw
Fixing the profile	Every 150 mm

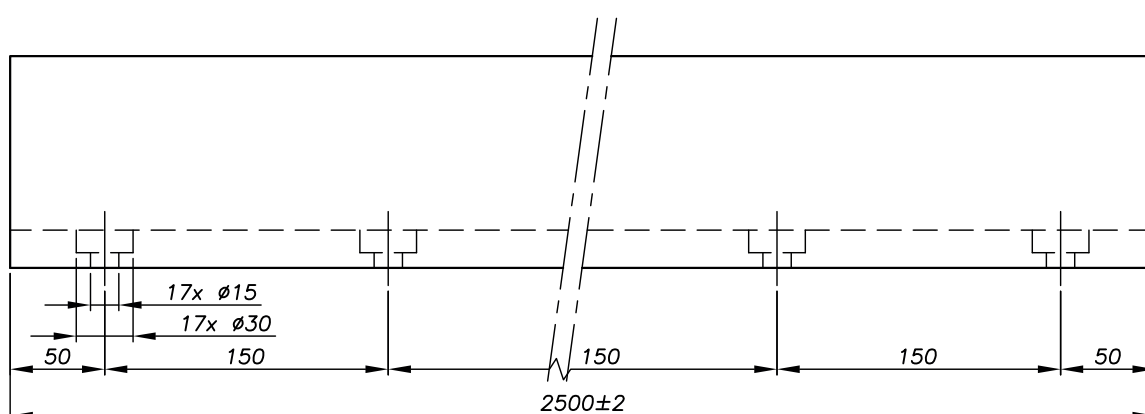
**FOR MORE INFORMATION  
ON ANCHORING THE PROFILE:**  
see our country performance guide  
or the Technical Advice for each profile.



## TECHNICAL PLANS

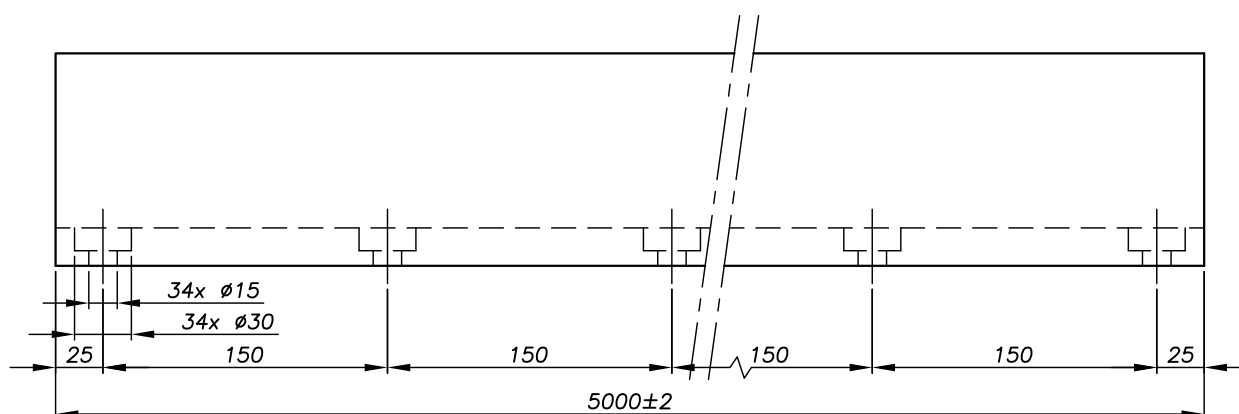
### ► 2 500 mm - Reference 0070RAIL19

### ► 2 500 mm - Undrilled profile - Reference 0070RAIL209



### ► 5 000 mm - Reference 0070RAIL29

### ► 5 000 mm - Undrilled profile - Reference 0070RAIL509



## DRAINAGE & EXPANSION

For more details, see **page 50**



# INSTRUCTIONS FOR ASSEMBLY

## ONE SIDE WEDGE



### INSTRUCTIONS BEFORE INSTALLATION

Drill the support using a tool suitable for the substrate.

If the substrate is uneven, level the profile by adding our Sadev wedging set.

Adjust and fix the rail to the fixing points using the appropriate wrench.

- 1 Apply pressure to the tool **ONE SIDE** to insert the wedges into the rail.
- 2 Clip on the exterior cladding.
- 3 Clip on the exterior seal.
- 4 Insert the glass and adjust to plumb using the level.
- 5 Insert and screw on the top wedge.
- 6 Clip on the cladding.
- 7 Insert the press-in gasket.

Glue the end cap to the end of the rail.



### INSTALLATION INSTRUCTIONS

[www.sadev.com/downloads](http://www.sadev.com/downloads)

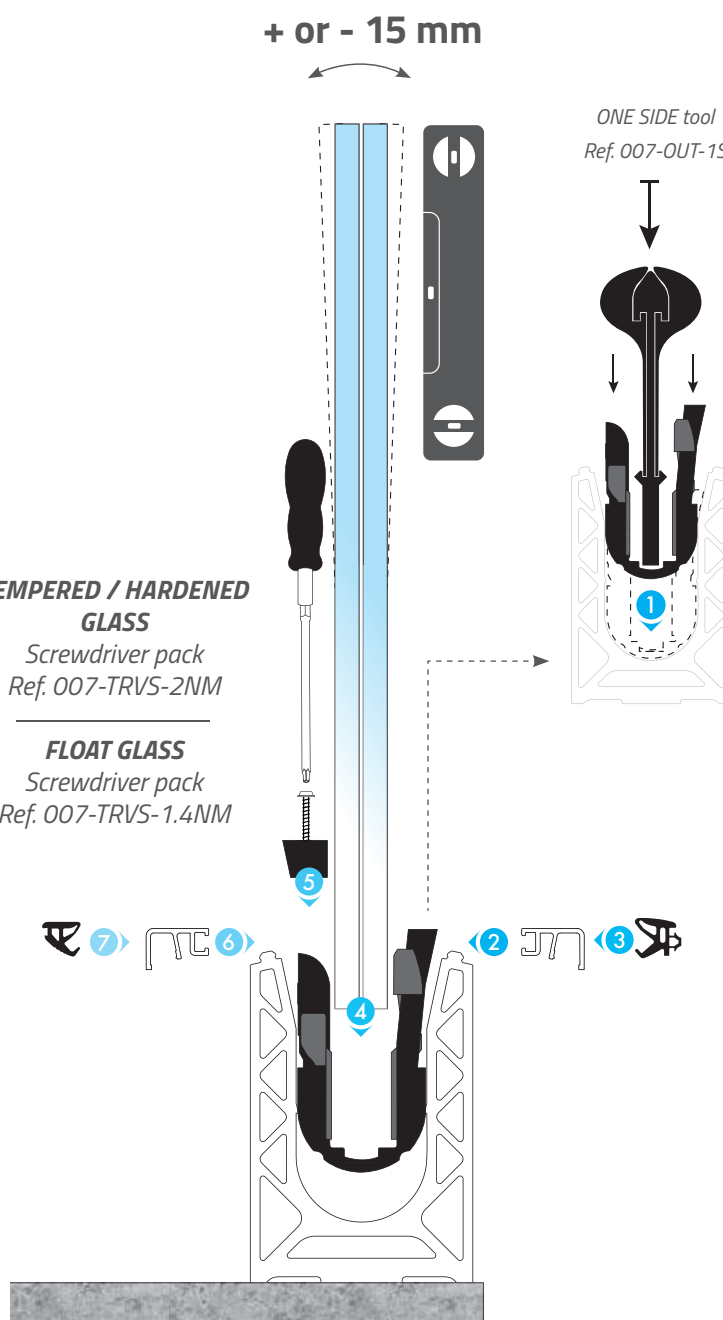


#### TEMPERED / HARDENED GLASS

Screwdriver pack  
Ref. 007-TRVS-2NM

#### FLOAT GLASS

Screwdriver pack  
Ref. 007-TRVS-1.4NM



## DOUBLE SIDE WEDGE



## INSTRUCTIONS BEFORE INSTALLATION

*Drill the support using a tool suitable for the substrate.*

*If the substrate is uneven, level the profile by adding our Sadev wedging set.*

*Adjust and fix the rail to the fixing points using the appropriate wrench.*

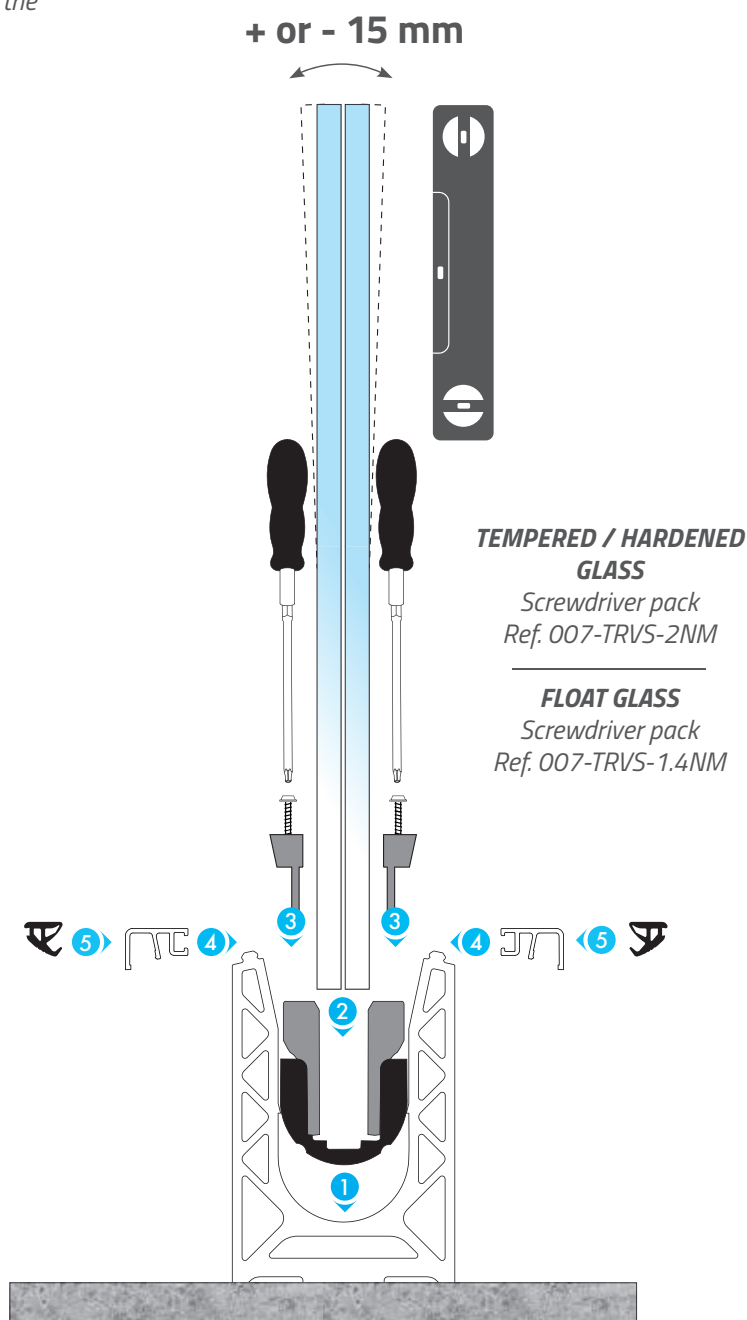
- 1 Install the wedges in the rail.
- 2 Insert the glass and adjust to plumb using the level.
- 3 Insert and screw in the top wedges.
- 4 Clip on the claddings.
- 5 Insert the press-in gasket.

Glue the end cap to the end of the rail.



## INSTALLATION INSTRUCTIONS

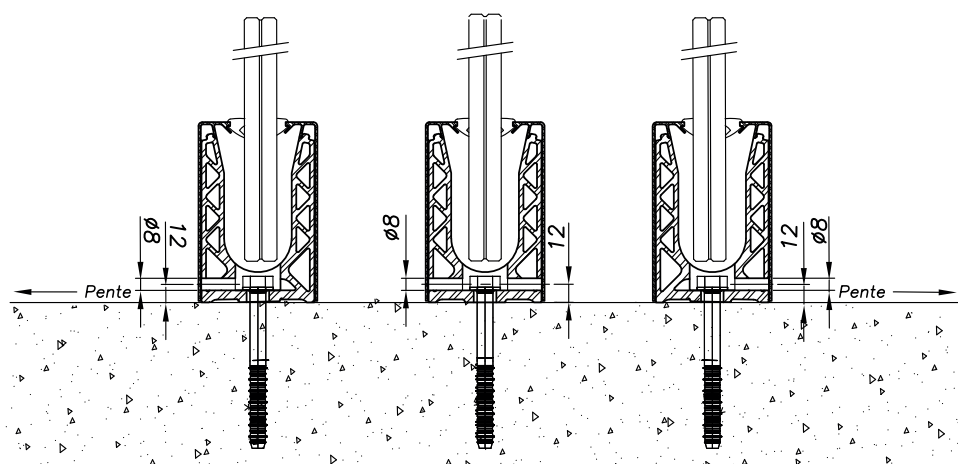
[www.sadev.com/downloads](http://www.sadev.com/downloads)



# DRAINAGE & EXPANSION

## DRAINAGE

Drainage in the SABCO guardrail is achieved by drilling the aluminum profile and/or the finishing cladding according to the diagrams below. As the rail must be set in a straight line (without distortion), the water drains naturally from both sides of the rail. Depending on the situation, holes with a diameter of 8 mm can be drilled on site in the plug and/or in the profile for water drainage.



## EXPANSION

Taking account of expansion to ensure performance of the profiles.

Aluminum						
2 500 mm		Maximum profile temperature				
Profile temperature during installation		40°C/104°F	50°C/122°F	60°C/140°F	70°C/158°F	80°C/176°F
	-20°C/-4°F	4 mm	4 mm	5 mm	5 mm	6 mm
	-10°C/-14°F	3 mm	4 mm	4 mm	5 mm	5 mm
	0°C/32°F	3 mm	3 mm	4 mm	4 mm	5 mm
	10°C/50°F	2 mm	3 mm	3 mm	4 mm	4 mm
	20°C/68°F	1 mm	2 mm	3 mm	3 mm	4 mm
	30°C/86°F	1 mm	1 mm	2 mm	3 mm	3 mm
5 000 mm		Maximum profile temperature				
Profile temperature during installation		40°C/104°F	50°C/122°F	60°C/140°F	70°C/158°F	80°C/176°F
	-20°C/-4°F	7 mm	8 mm	9 mm	11 mm	12 mm
	-10°C/-14°F	6 mm	7 mm	8 mm	9 mm	11 mm
	0°C/32°F	5 mm	6 mm	7 mm	8 mm	9 mm
	10°C/50°F	4 mm	5 mm	6 mm	7 mm	8 mm
	20°C/68°F	3 mm	4 mm	5 mm	6 mm	7 mm
	30°C/86°F	1 mm	3 mm	4 mm	5 mm	6 mm

Got any questions?

Contact us on +33 (0)4 50 08 39 00 or on our website

INSTALLATION INSTRUCTIONS: [www.sadev.com/downloads](http://www.sadev.com/downloads)