

# SIMONSWERK

## BAKA®

### hinge G 1/140

for rebated timber door leaves

#### hinge

#### Technical details

knuckle length	140,0 mm
h x b frame leaf	70,0 x 51,0 mm
hole / pin diameter	4,5 mm
material thickness	2,5 mm
h x b door leaf	70,0 x 51,0 mm
pin diameter	10,0 mm

#### Note

Equipped with fixed pin and offset hinge leaves, for mortising, with nail holes.

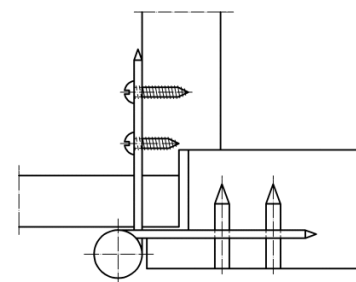
Please consider DIN reference.

#### Items (DIN reference: DIN left hand)

Finish(es)	galvanised
packing unit	pack of 10
item number	5 130561 2 01006

#### Items (DIN reference: DIN right hand)

Finish(es)	galvanised
packing unit	pack of 10
item number	5 130561 1 01006



cross section